



The World's Finest Alginate for Making Molds from Life™

Family Hand Casting Kit



STEP-BY-STEP INSTRUCTIONS

Please read these instructions carefully before beginning.

This Life Casting Kit Includes:

- HandGel™ 570 Alginate
- LiquiStone™ (large bag)
- LiquiStone™ (small bag)
- Grey Clay
- Thermometer
- Mixing Stick
- Plastic Mold Bucket
- Small Mixing Cup
- Instructions
- Safety Data Sheets



Watch the Video:
www.accu-cast.us/familyhandkit

You will also need:

- Water at 70°F/21°C
- Petroleum Jelly
- Chip Brush
- Measuring Cup
- Large Mixing Sticks
- Large Mixing Bucket
- **Cordless Drill**
- Turbine Mixer
- Dust Mask*
- Plastic Knife



***Note:** *It is recommended to wear a dust mask when working with any powdered material.*

STEP 1: Preparing for Mold Making

1



Remove all jewelry, bracelets and watches from hands. Decide on the specific hand position you wish to replicate in the mold.

2



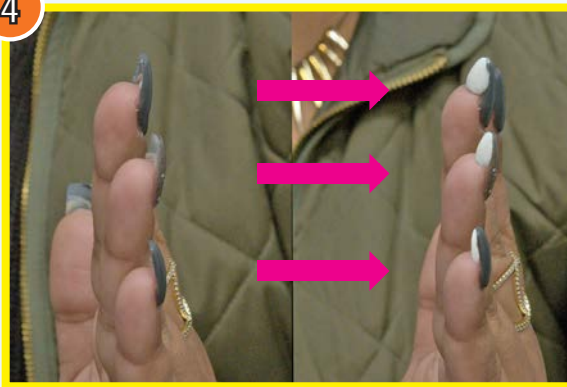
Practice placing hand(s) in the Mold Bucket and maintain 1/2 in. (1.27cm) clearance from the sides and bottom of the container.

3



Apply petroleum jelly to the top quarter of the Mold Bucket to release the cured plaster from the bucket. (The area to cover is highlighted.)

4



For hand models with long fingernails, apply grey clay to the underside of the nail to reinforce the casting.

5



Measure out 6 qts. (5.7 L) of water and pour into a large mixing bucket. **If you have HARD water or use a filter for your water, use bottled water.**

6



Check the temperature of the water using the supplied thermometer to be sure it is at 70°F/21°C.



STEP 2: Making the Alginate Mold

1



Attach a turbine mixer to a variable speed cordless drill.

2



Wear a dust mask and slowly sift both bags of HandGel™ 570 alginate into the water.

3



Wear a dust mask as you drill mix. Mix the alginate into the water for two minutes.

4



After drill mixing, use a mixing stick to stir the mixture, scrape the sides and bottom of the bucket as you stir.

5



Pour the alginate into the Mold Bucket.

6



Have each person wet their hands thoroughly with water.

STEP 2: Making the Alginate Mold



Slowly immerse hands into alginate to coat the entire hand in material.



Raise hands out of the bucket briefly to help prevent air bubbles and then resubmerge the hands into the bucket and hold position.



Hold the pose steady until the material sets to a firm gel. Do not touch the sides and bottom of the bucket. Alginate will set in 5 min.



Once the mold is cured, gently wiggle hands and fingers to **slowly remove the hands one at a time** from the alginate mold. Start with the hand closest to the top of the mold first and then slowly remove the hands in the lower areas of the mold.



Mold is now ready for casting.

Alginate molds are temporary, so cast into the mold immediately!



STEP 3: Casting LiquiStone™ Gypsum Cement

1



Measure 40 oz (1.2 L) of water.

2



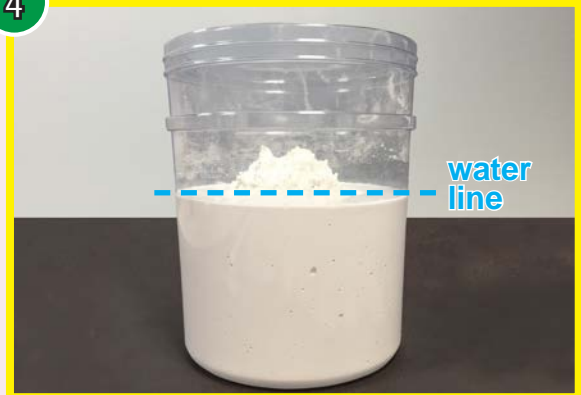
Pour the water into a large mixing bucket.

3



Slowly sift both bags of LiquiStone™ into the water.

4



Allow the LiquiStone™ to soak in the water for 2 minutes before mixing.

5



Drill mix the LiquiStone™ and water.

6



After drill mixing, use a mixing stick to scrape the sides and bottom of the mixing bucket. Stir thoroughly.

STEP 3: Casting LiquiStone™ Gypsum Cement



Pour 1/4 amount of LiquiStone™ into the mold cavity.



Rotate the mold in all directions for about 10 seconds to help minimize air entrapment in the finished casting.



Lay the mold back down on the table and pour the rest of the LiquiStone™ into the mold to complete the pour.



After pouring, gently tap the side of the bucket to help settle the LiquiStone™.



Allow LiquiStone™ to set for 3 hours at room temperature (73°F/23°C).



After cure, slowly invert the container downward to release the mold.



STEP 4: Demolding the Casting

1



Use a plastic knife to carefully score the alginate mold on all sides.

2



Carefully remove small chunks of alginate to reveal the casting.

3



Casting reproduces the hands in precise detail.

4



Allow casting to air dry for 2 hours before handling.

Repairing Casting Use the small pack of LiquiStone™ to repair any defects in your casting.



Surface imperfections can be quickly repaired using LiquiStone™.

1



Dispense a small amount of water into the small mixing cup included in the kit.



Repairing Casting Use the small pack of LiquiStone™ to repair any defects in your casting.

2



Add a small amount of LiquiStone™ into the water.

3



Mix until you get a thick paste.
Add LiquiStone™ or water as needed to create a thick consistency in the mixture.

4



A small amount of LiquiStone™ is applied to the area to be fixed.

5



Use your finger to smooth and wipe away any excess material.

6



Repaired area cures in 3 hours.

Watch the Video:
www.accu-cast.us/familyhandkit