

BR COLOR WHEEL™



BUDDY RHODES COLOR
SELECTION GUIDE



Buddy Rhodes Concrete Products is unique in our ability to offer limitless color options. Whatever color you are after, and however you would like to accomplish that, one of the options **COLOR TELLS A STORY** in our Buddy Rhodes Color Wheel™ will meet your needs. The pigments we use are designed specifically to withstand the caustic nature of cement, are UV resistant, and provide the largest range of color possibilities on the planet.

GETTING THE MOST OUT OF COLOR FOR CONCRETE

The natural color of all Buddy Rhodes Concrete mixes is bone white, with the exception of Buddy Rhodes Vertical Mix. For the bone white mixes, we use white cement as a primary ingredient because it is more consistent in quality and color compared to gray cements. For this reason, all of our colors are developed using a white cement base. You can use gray cement for your piece, but know that the color may vary from casting to casting.

HOW TO CALCULATE COLOR IN CONCRETE

All colors are formulated as a percentage of the Total Cementitious Binder (TCB) of the mix. TCB is the sum of all cementitious materials in the mix, including all cement and pozzolans. The TCB is multiplied by the “Loading Percentage Rate” (LR) listed with each of the color swatches, this determines how much pigment needs to be added to your mix.

HERE’S HOW IT WORKS -

- **Determine your color** - There is a percentage number listed on each swatch in the pure pigments and Specialty Collection sections of this catalog. This represents your loading percentage rate (LR). As an example, “2058-30 Deep Ocean” has a LR of 8.55% or .0855
- **Determine your TCB** - Your mix is a blend of cement, pozzolan, sand, aggregate, and so on. We will use GFRC Blended Mix for this example, which has a TCB of 26 lb.
- **Determine your Number of Batches** - How much coverage will you get with your mix? This will determine how many batches of concrete you will need to make, which will tell you how much pigment you need. Let’s say the piece you are making is 10 sq ft and 1” thick. The GFRC Blended Mix covers 5 sq ft at 1” thick, so you will need 2 batches of mix.
- **Round up** - Add 10% for spillage and test samples, then round up one more time.

26 (TCB)	x	.0855 (LR)	= 2.223
2.223	x	1.1 (10%)	= 2.445
2.445	x	2 (batches)	= 4.89

Result = 5 lb of pigment needed.



BEST PRACTICE

The final appearance of the concrete product is determined by a combination of several color factors, including surface texture, color of the cement-pigment paste, aggregate color, admixtures, and water/cement ratio. Test using a small batch of your mix design before any large pour. Use the same steps as above to determine your color needs.

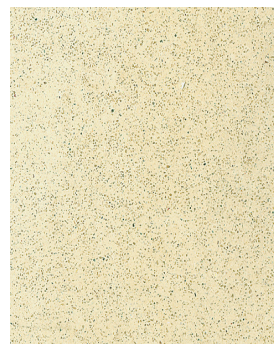
This is a series of colors that are timeless, aesthetically rich, and simple to use. Each **SIGNATURE COLLECTION** Signature Color is formulated so that 1 lb of pigment produces outstanding shades of color when added to one 50 lb bag of our mix. The amount of pigment used per bag can be increased (up to double) to produce richer tones, and can be reduced to create more subtle colors.



ONE BAG OF
BLENDED MIX

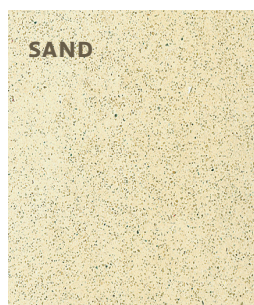
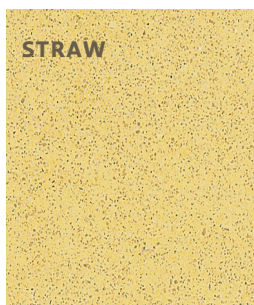
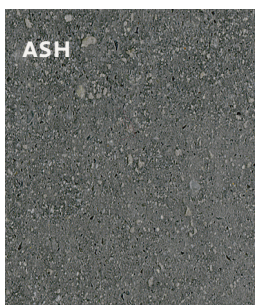
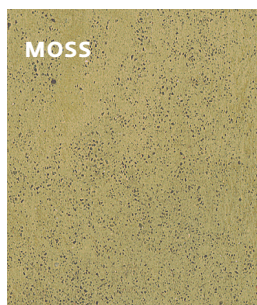
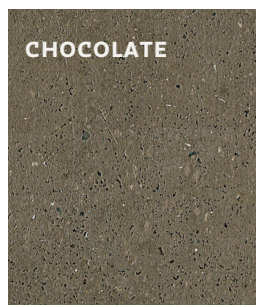


1LB UNIT OF
SIGNATURE COLOR
OF YOUR CHOICE



PERFECT COLOR
EVERY TIME!

AVAILABLE COLORS

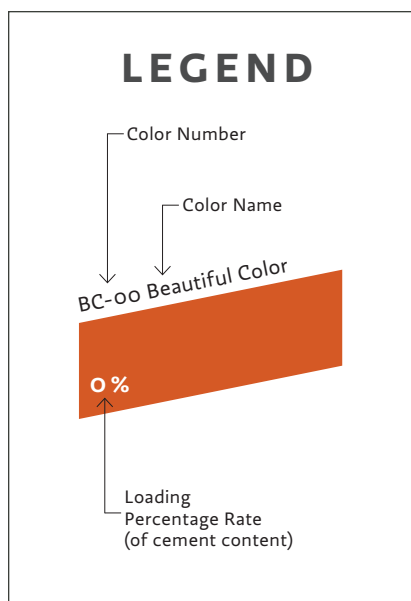


*Colors shown in cured, polished Buddy Rhodes GFRC Blended Mix.

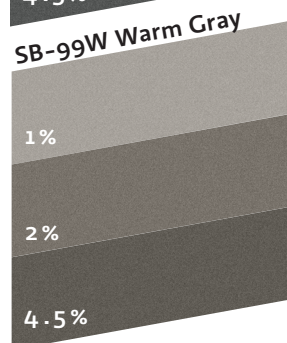
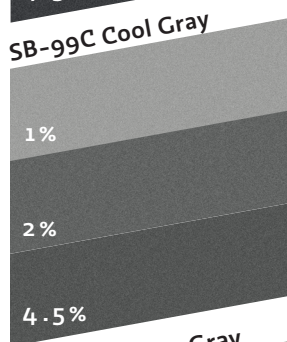
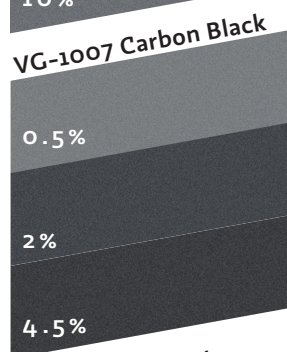
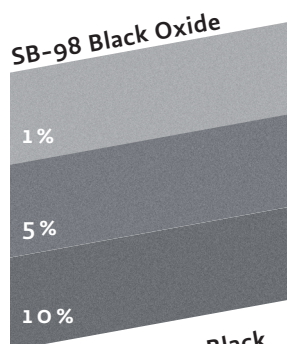
Prefer to blend your own custom colors? You have the power to formulate any color using our range of Pure Pigments. Pure pigments are a selection of organic and

PURE COLLECTION

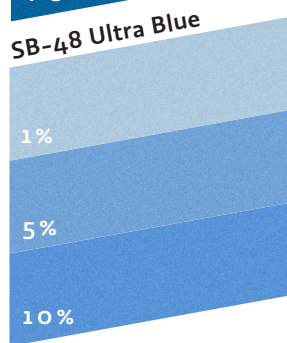
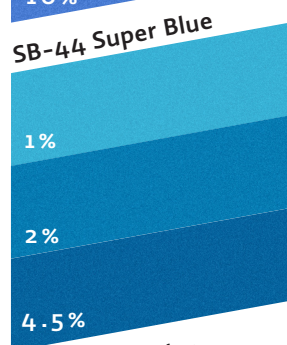
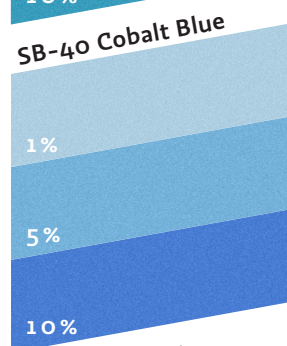
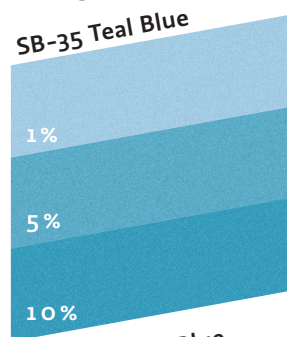
inorganic pigments suitable for use in concrete. Packaged in small quantities, or in bulk for the professional.



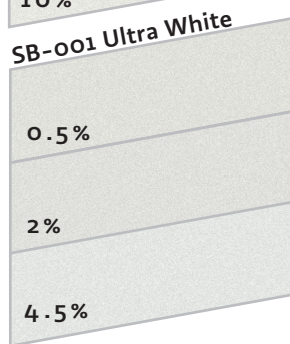
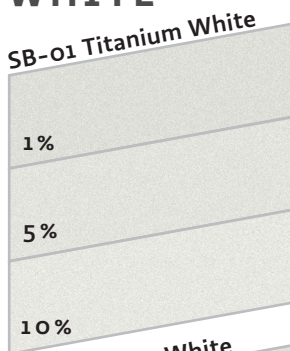
BLACK



BLUE

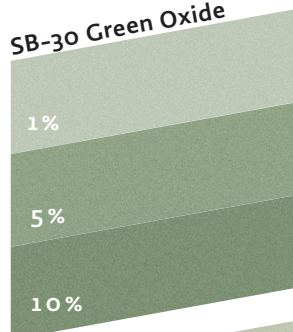


WHITE

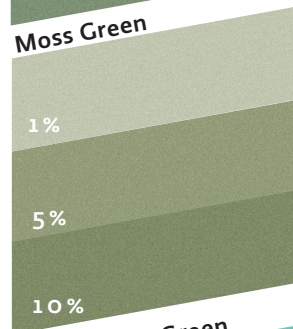


GREEN

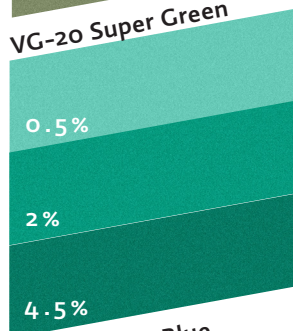
SB-30 Green Oxide



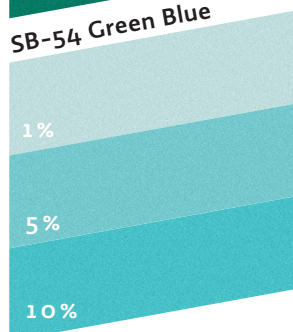
Moss Green



VG-20 Super Green

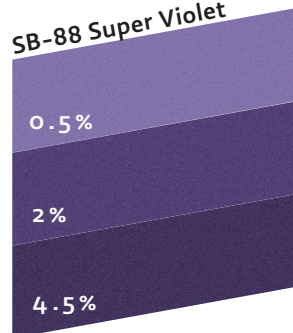


SB-54 Green Blue



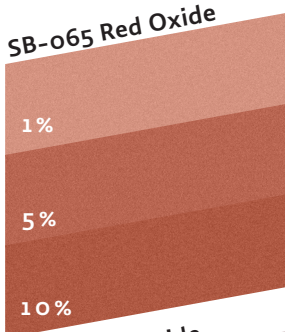
VIOLET

SB-88 Super Violet

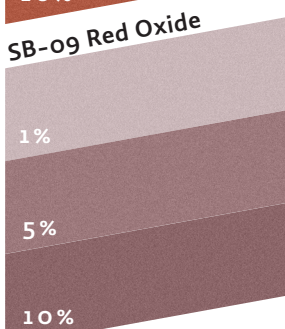


RED

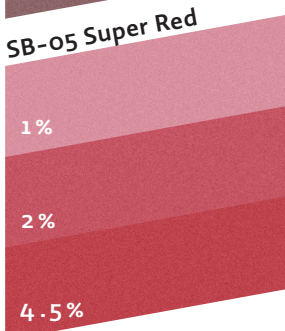
SB-065 Red Oxide



SB-09 Red Oxide

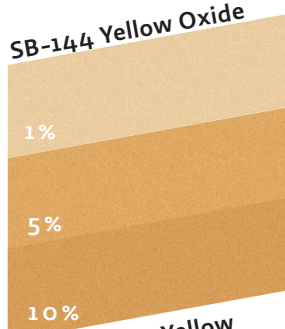


SB-05 Super Red

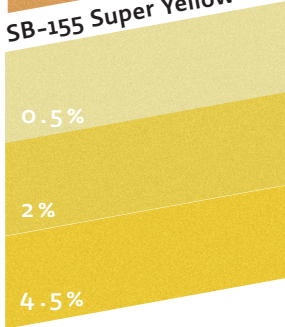


YELLOW

SB-144 Yellow Oxide

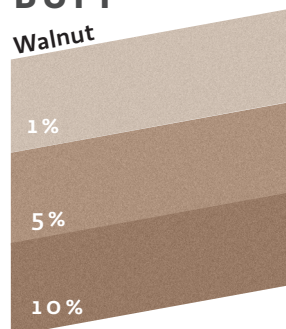


SB-155 Super Yellow

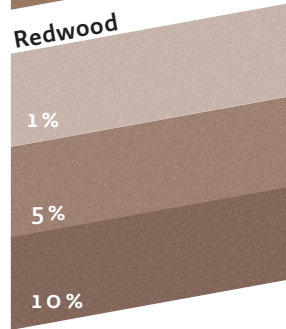


BUFF

Walnut

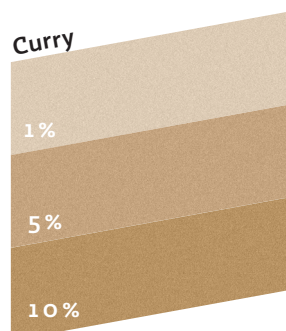


Redwood

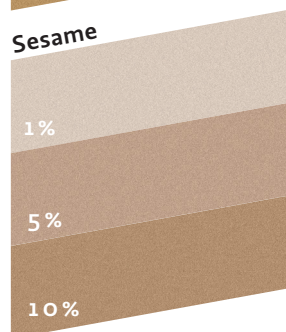


TAN

Curry



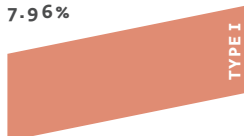
Sesame



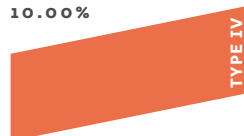
Over the years, we have formulated hundreds of colors based on the Benjamin **SPECIALTY COLLECTION** Moore™ color wheel. The result of that effort is a huge library of Specialty Colors spanning the entire spectrum. These pigments are split into four pricing tiers based on raw material cost. Type I colors are the least expensive while Type IV are the most expensive.



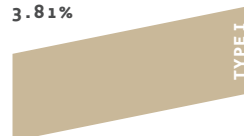
27 San Antonio Rose
7.96%



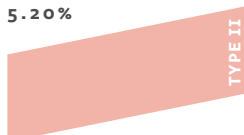
84 Fiesta Orange
10.00%



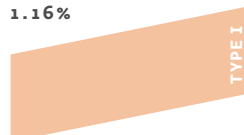
235 Oakridge
3.81%



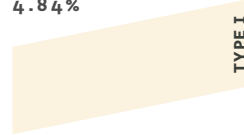
31 Georgia Peach
5.20%



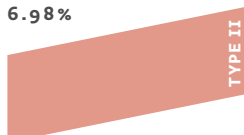
96 Soft Salmon
1.16%



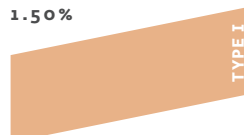
267 Canvas
4.84%



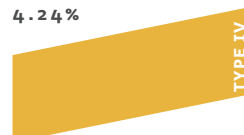
32 Coral Rock
6.98%



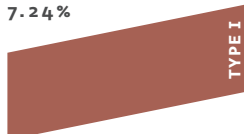
109 Canyonlands
1.50%



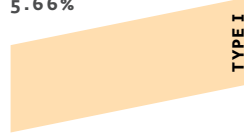
350 Sun Valley
4.24%



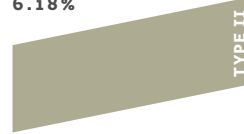
35 Baked Clay
7.24%



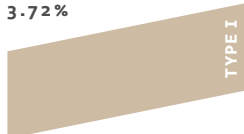
143 Golden Light
5.66%



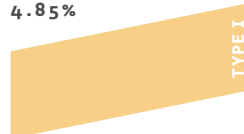
509 Cypress Green
6.18%



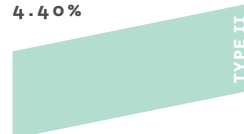
42 Wise Owl
3.72%



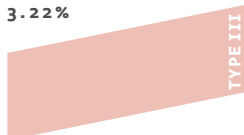
180 Beverly Hills
4.85%



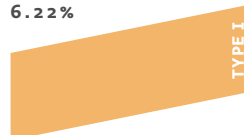
590 Celadon
4.40%



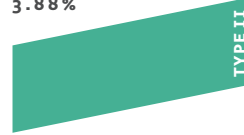
45 Romantica
3.22%



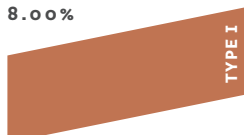
181 Pan for Gold
6.22%



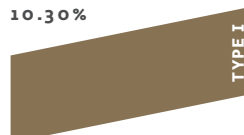
607 Albuquerque Teal
3.88%



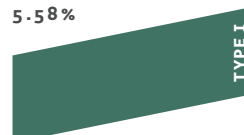
63 Pennies from Heaven
8.00%



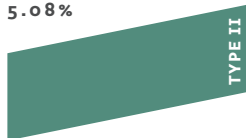
231 Aged Bronze
10.30%



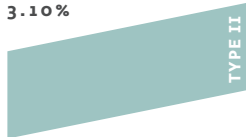
643 Steamed Spinach
5.58%



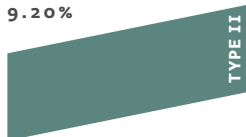
650 Highlands Green
3.08%



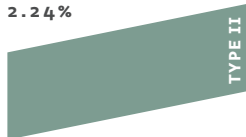
676 Spirit in the Sky
3.10%



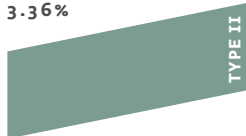
678 Pacific Rim
9.20%



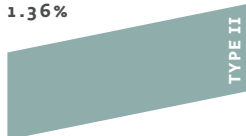
684 Shenandoah
2.24%



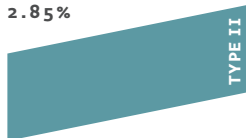
705 Sioux Falls
3.36%



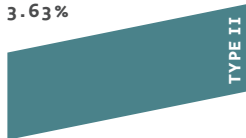
711 Boca Raton Blue
1.36%



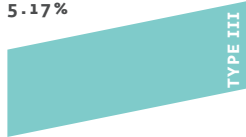
726 Rendezvous Bay
2.85%



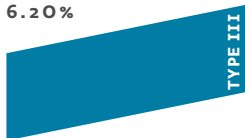
727 Calypso Blue
3.63%



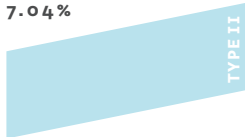
739 Un-Teal We Meet Again
5.17%



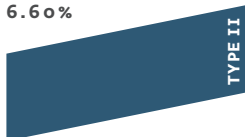
784 Blue Macaw
6.20%



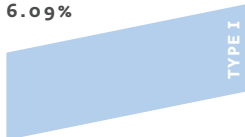
785 Morning Glory
7.04%



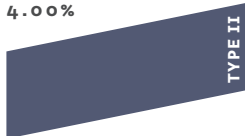
805 NY State of Mind
6.60%



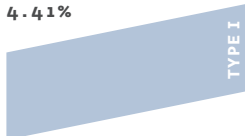
815 Swiss Blue
6.09%



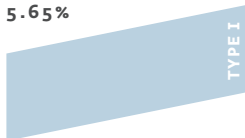
826 Stunning
4.00%



829 Sunrise
4.41%



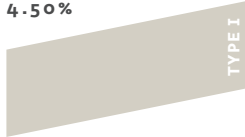
836 Sea View
5.65%



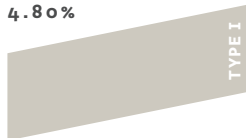
856 Silver Satin
6.40%



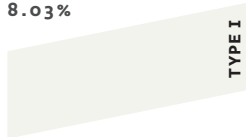
859 Collingwood
4.50%



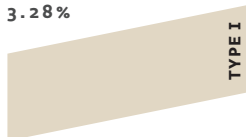
860 Apparition
4.80%



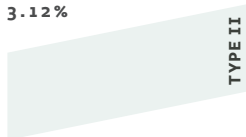
869 Oxford White
8.03%



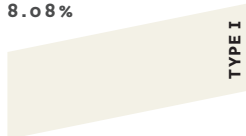
964 White Sand
3.28%



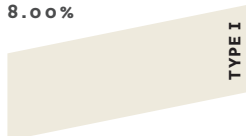
874 Fanfare
3.12%



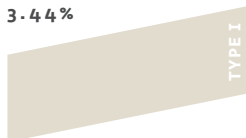
967 Cloud White
8.08%



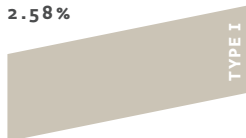
968 Dune White
8.00%



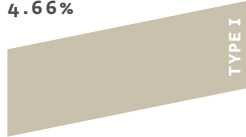
971 Olympic Mountains
3.44%



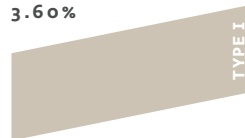
973 Ice Formations
2.58%



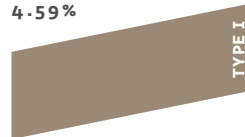
976 Coastal Fog
4.66%



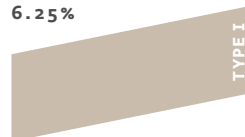
983 Smokey Taupe
3.60%



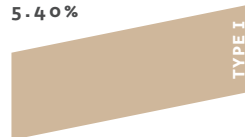
986 Smoky Ash
4.59%



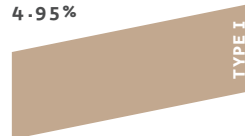
996 Ashen Tan
6.25%



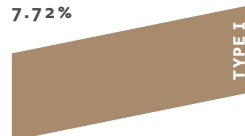
1039 Stone House
5.40%



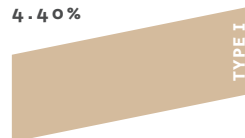
1054 Sherwood Tan
4.95%



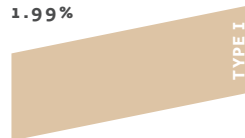
1055 Algonquin Trail
7.72%



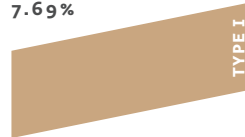
1060 Blanched Almond
4.40%

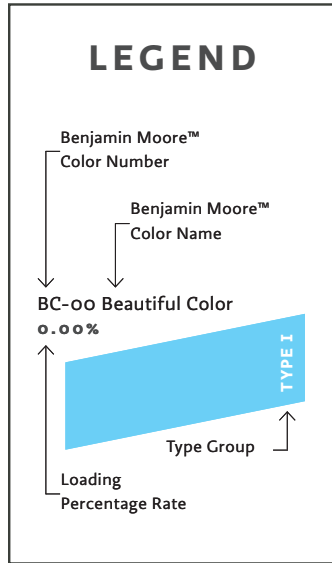


1068 Squire Hill Buff
1.99%

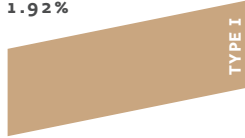


1070 Barley Harvest
7.69%

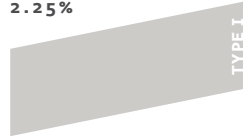




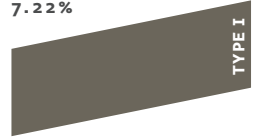
1075 Fairway Oaks
1.92%



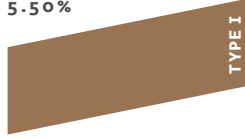
1459 Metro Gray
2.25%



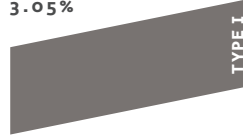
1477 Deep Creek
7.22%



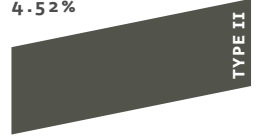
1125 Acorn
5.50%



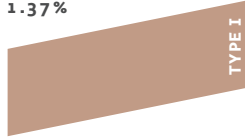
1462 Gray Mountain
3.05%



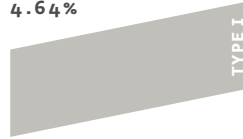
1484 Ashwood Moss
4.52%



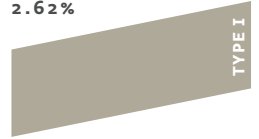
1127 Nutmeg
1.37%



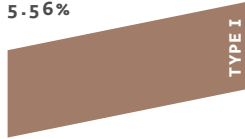
1466 Smoke Embers
4.64%



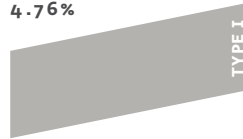
1487 Herbal Escape
2.62%



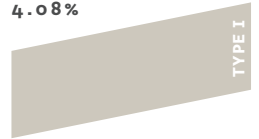
1162 Wooded Vista
5.56%



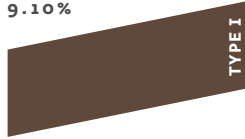
1467 Baltic Gray
4.76%



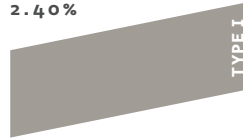
1541 London Fog
4.08%



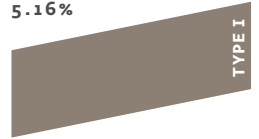
1238 Falcon Brown
9.10%



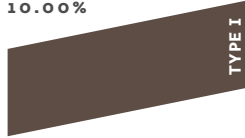
1468 Willow Creek
2.40%



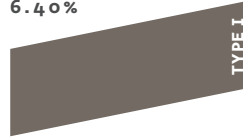
1545 Iron Gate
5.16%



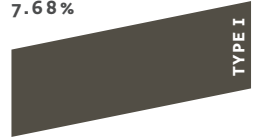
1239 Rural Earth
10.00%



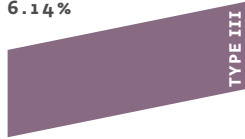
1470 Bear Creek
6.40%



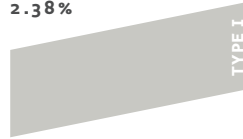
1547 Dragon's Breath
7.68%



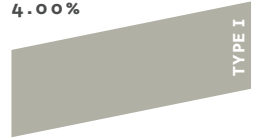
1378 Lazy Afternoon
6.14%



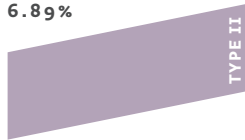
1472 Silver Chain
2.38%



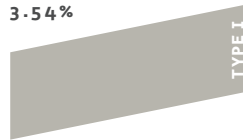
1558 Fieldstone
4.00%



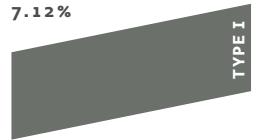
1383 Iris Bliss
6.89%



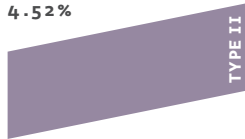
1473 Gray Huskie
3.54%



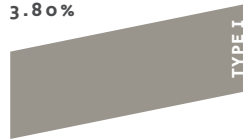
1575 Rainy Afternoon
7.12%



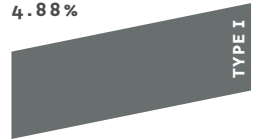
1384 Carolina Plum
4.52%



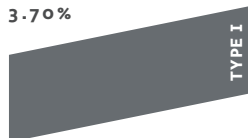
1475 Graystone
3.80%



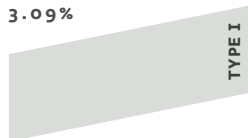
1602 Gunmetal
4.88%



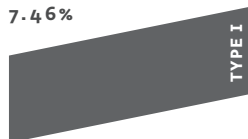
1608 Ashland Slate
3.70%



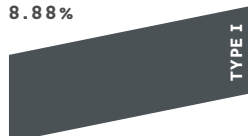
1611 Graytint
3.09%



1616 Stormy Sky
7.46%



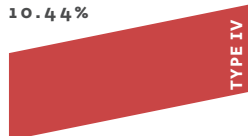
1624 Westcott Navy
8.88%



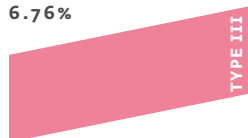
1649 Polaris Blue
1.1%



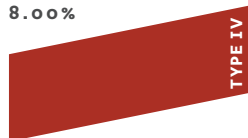
2000-10 Red
10.44%



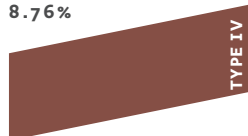
2000-40 Strawberry Shortcake
6.76%



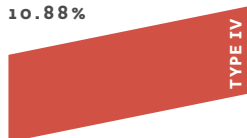
2003-10 Million Dollar Red
8.00%



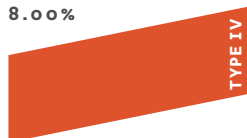
2005-10 Red Rock
8.76%



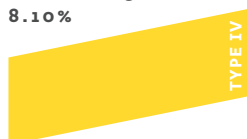
2009-10 Redstone
10.88%



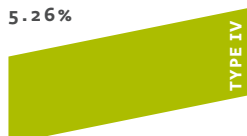
2013-20 Orange Nectar
8.00%



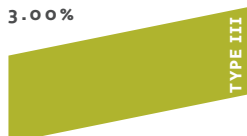
2022-30 Bright Yellow
8.10%



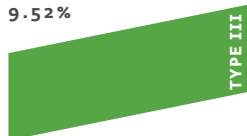
2026-10 Lime Green
5.26%



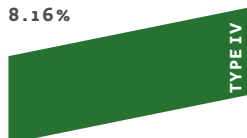
2028-30 Tequila Lime
3.00%



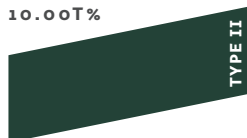
2032-20 Traffic Light Green
9.52%



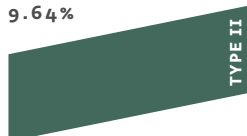
2034-10 Clover Green
8.16%



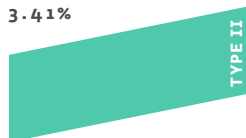
2041-10 Hunter Green
10.00%



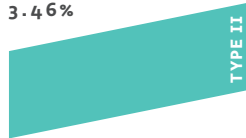
2041-20 Fiddlehead Green
9.64%



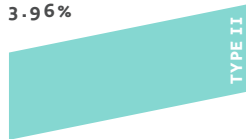
2042-40 Miami Green
3.41%



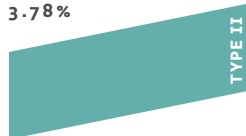
2048-40 Poolside Blue
3.46%



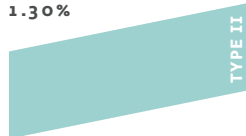
2048-50 Tropicana Cabana
3.96%



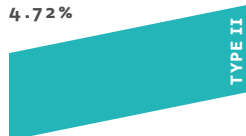
2049-40 Peacock Blue
3.78%



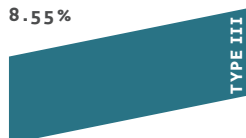
2049-50 Spectra Blue
1.30%



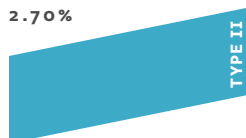
2056-40 Cool Aqua
4.72%



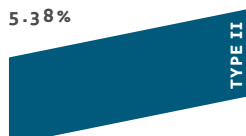
2058-30 Deep Ocean
8.55%



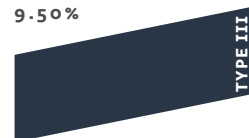
2059-40 Yosemite Blue
2.70%



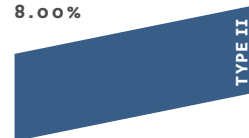
2060-20 California Blue
5.38%



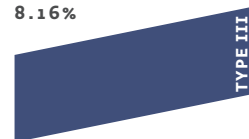
2061-10 Deep Royal
9.50%



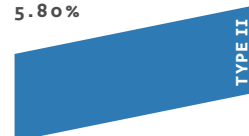
2064-20 Patriot Blue
8.00%



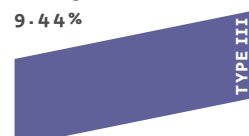
2066-10 Blue
8.16%



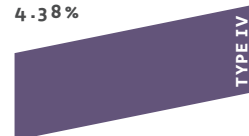
2066-30 Big Country Blue
5.80%



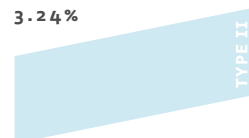
2068-30 Scandinavian Blue
9.44%



2071-20 Gentle Violet
4.38%



2061-70 Caribbean Mist
3.24%

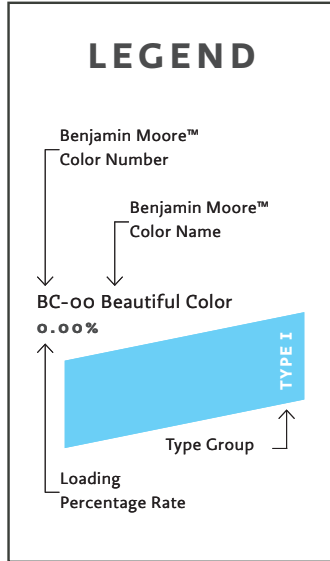


2062-10 Polo Blue
9.00%

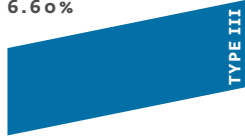


2063-10 Old Navy
10.00%

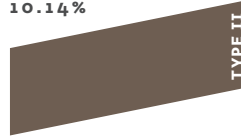




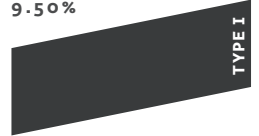
2065-30 Brilliant Blue
6.60%



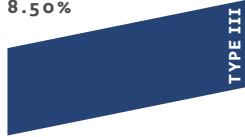
2108-20 Sierra Spruce
10.14%



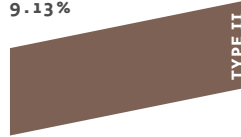
2119-20 Black Berry
9.50%



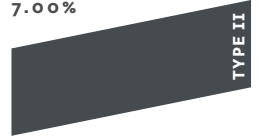
2067-20 Starry Night Blue
8.50%



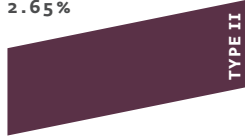
2110-20 Brown Tar
9.13%



2120-30 Witching Hour
7.00%



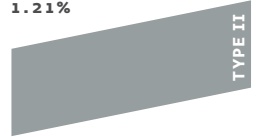
2071-10 Grape Juice
2.65%



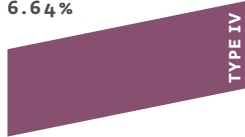
2111-60 Barren Plain
5.18%



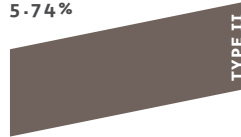
2121-30 Pewter
1.21%



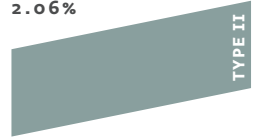
2075-20 Mulberry
6.64%



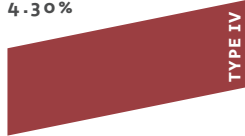
2112-30 Stone Brown
5.74%



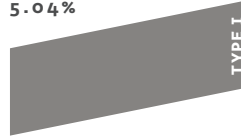
2123-30 Sea Star
2.06%



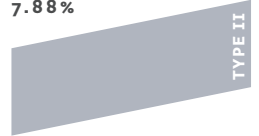
2081-10 Burnt Peanut Red
4.30%



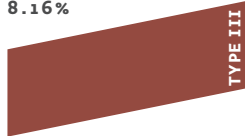
2112-40 Stone
5.04%



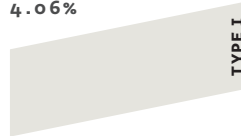
2120-50 Silver Spring
7.88%



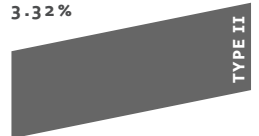
2088-10 Red Oxide
8.16%



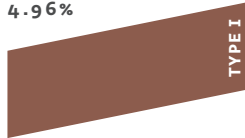
2112-70 American White
4.06%



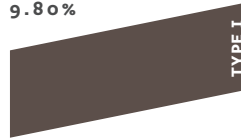
2121-10 Gray
3.32%



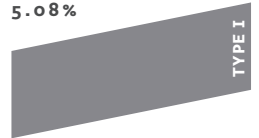
2094-20 Copper Mine
4.96%



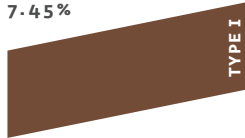
2115-10 Appalachian Brown
9.80%



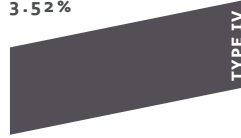
2121-20 Steel Wool
5.08%



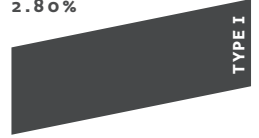
2096-20 Chocolate Truffle
7.45%



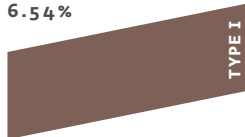
2117-20 Galaxy
3.52%



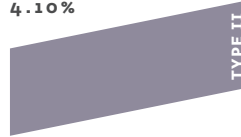
2124-10 Wrought Iron
2.80%



2106-30 Pine Cone
6.54%



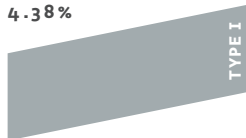
2117-40 Tropical Dust
4.10%



2125-20 Deep Space
2.58%



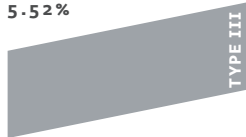
2125-40 Shadow Gray
4.38%



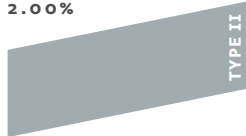
2126-20 Raccoon Fur
8.64%



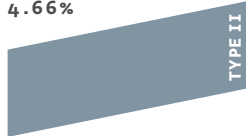
2126-40 Sweatshirt Gray
5.52%



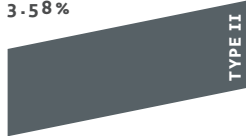
2127-50 Pike's Peak Gray
2.00%



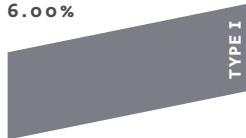
2128-40 Oxford Gray
4.66%



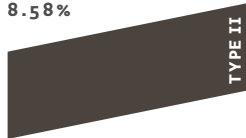
2131-30 Lead Gray
3.58%



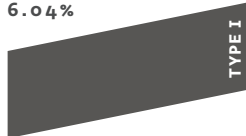
2133-40 Dior Gray
6.00%



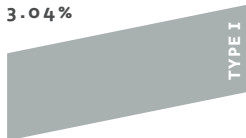
2134-20 Midsummer Night
8.58%



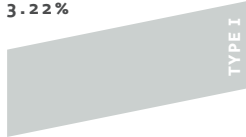
2134-30 Iron Mountain
6.04%



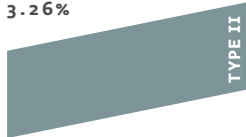
2134-50 Gull Wing Gray
3.04%



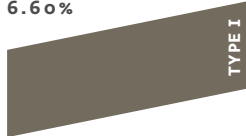
2134-60 Whitestone
3.22%



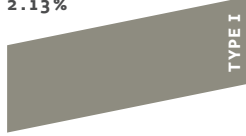
2136-40 Agean Teal
3.26%



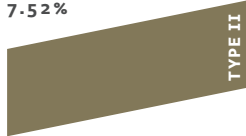
2137-30 Durango
6.60%



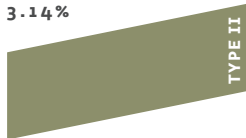
2137-40 Desert Twilight
2.13%



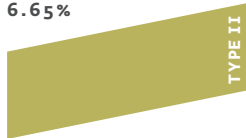
2143-10 Sage
7.52%



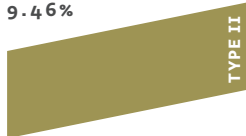
2144-20 Eucalyptus Leaf
3.14%



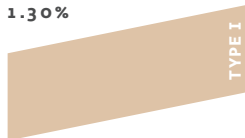
2146-30 Split Pea
6.65%



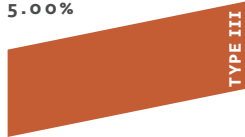
2147-20 Olive Moss
9.46%



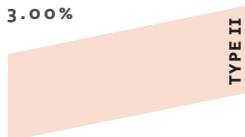
2162-50 Arizona Tan
1.30%



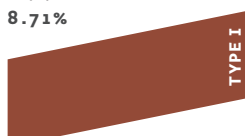
2170-20 Tropical Orange
5.00%



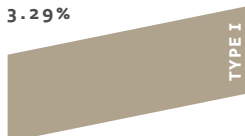
2170-60 Sunlit Coral
3.00%



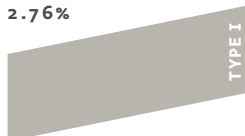
2174-20 Cinnamon
8.71%



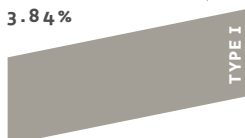
AC-2 Berkshire Beige
3.29%



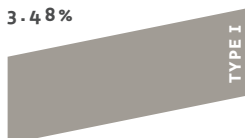
AC-26 Ozark Shadows
2.76%



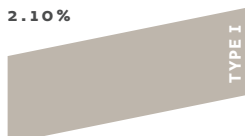
AC-27 Galveston Gray
3.84%



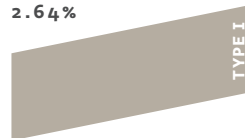
AC-30 Winter Gates
3.48%



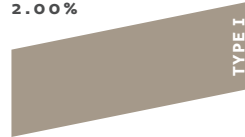
AC-34 Cape Hatteras Sand
2.10%



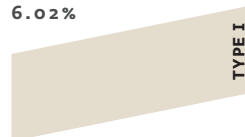
AC-35 Valley Forge Tan
2.64%



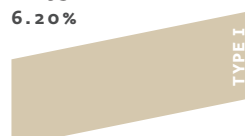
AC-36 Shenandoah Taupe
2.00%



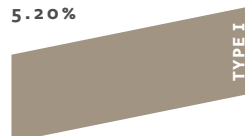
AF-55 Sonnet
6.02%



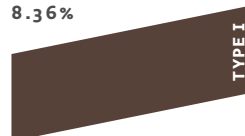
AF-95 Hush
6.20%



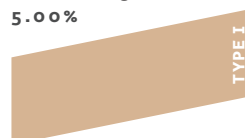
AF-155 Weimaraner
5.20%



AF-175 Barista
8.36%



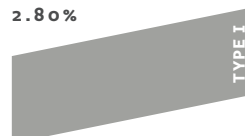
AF-200 Lingerie
5.00%



AF-655 Silhouette
7.50%



AF-700 Storm
2.80%



LEGEND

Benjamin Moore™
Color Number

Benjamin Moore™
Color Name

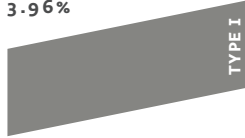
BC-00 Beautiful Color
0.00%

Loading
Percentage Rate

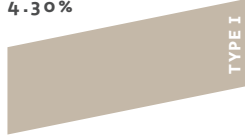
Type Group

TYPE I

AF-705 Cinder
3.96%



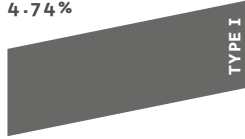
CC-490 Stone Hearth
4.30%



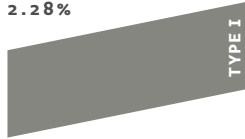
CC-542 Willow
5.50%



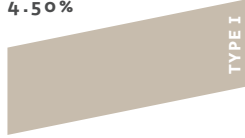
CC-544 Overcoat
4.74%



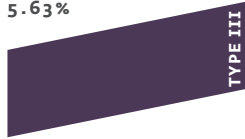
CSP-45 Street Chic
2.28%



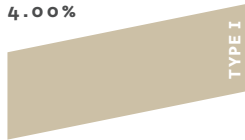
CSP-65 Old Soul
4.50%



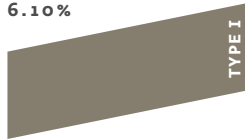
CSP-465 Purplicious
5.63%



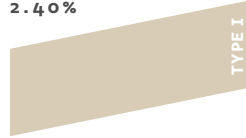
CSP-1035 Make Believe
4.00%



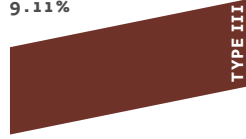
CW-75 Randolph Stone
6.10%



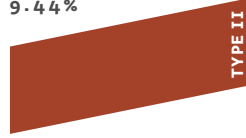
CW-140 Timson Sand
2.40%



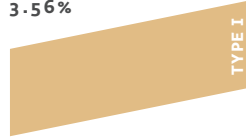
CW-250 Carriage Red
9.11%



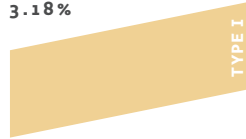
CW-320 Dragon's Blood
9.44%



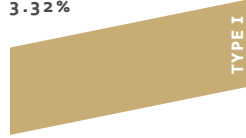
HC-9 Chestertown Buff
3.56%



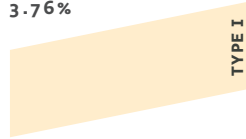
HC-12 Concord Ivory
3.18%



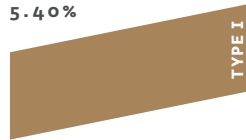
HC-14 Princeton Gold
3.32%



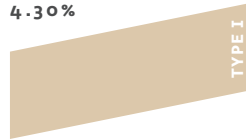
HC-36 Hepplewhite Ivory
3.76%



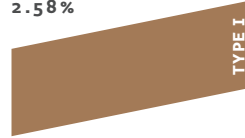
HC-37 Mystic Gold
5.40%



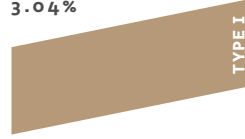
HC-39 Putnam Ivory
4.30%



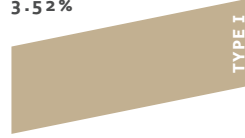
HC-40 Greenfield Pumpkin
2.58%



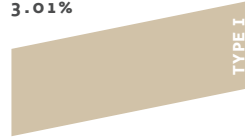
HC-43 Tyler Taupe
3.04%



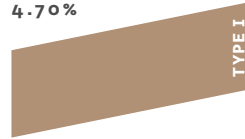
HC-44 Lenox Tan
3.52%



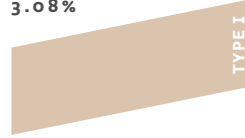
HC-45 Shaker Beige
3.01%



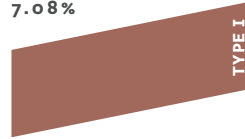
HC-46 Jackson Tan
4.70%



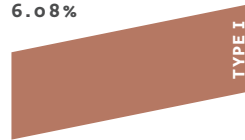
HC-48 Bradstreet Beige
3.08%



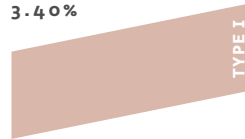
HC-50 Georgian Brick
7.08%



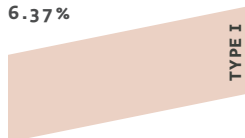
HC-51 Audubon Russet
6.08%



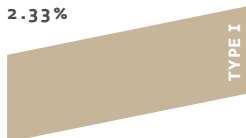
HC-58 Chippendale Rosestone
3.40%



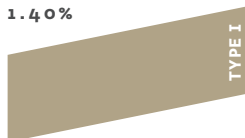
HC-59 Odessa Pink
6.37%



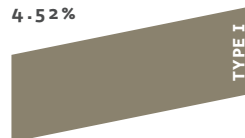
HC-79 Greenbrier Beige
2.33%



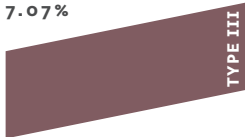
HC-94 Old Salem Gray
1.40%



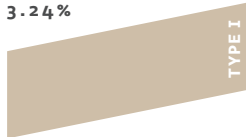
HC-109 Sussex Green
4.52%



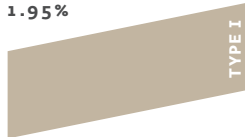
HC-61 New London Burgundy
7.07%



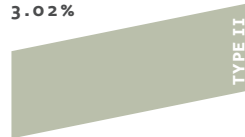
HC-80 Bleeker Beige
3.24%



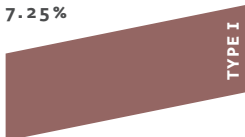
HC-95 Sag Harbor Gray
1.95%



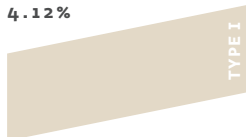
HC-114 Saybrook Sage
3.02%



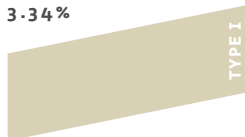
HC-66 Garrison Red
7.25%



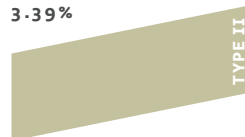
HC-81 Manchester Tan
4.12%



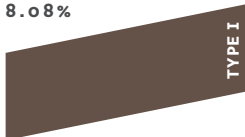
HC-96 Richmond Gray
3.34%



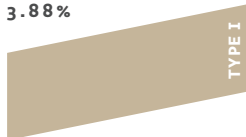
HC-115 Georgian Green
3.39%



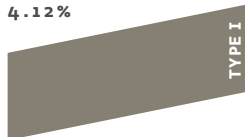
HC-68 Middlebury Brown
8.08%



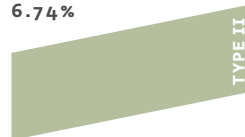
HC-82 Bennington Gray
3.88%



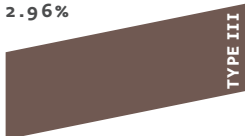
HC-100 Gloucester Sage
4.12%



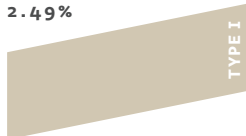
HC-118 Sherwood Green
6.74%



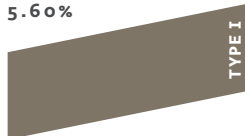
HC-71 Hasbrouck Brown
2.96%



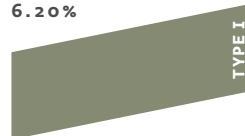
HC-83 Grant Beige
2.49%



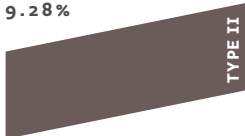
HC-103 Cromwell Gray
5.60%



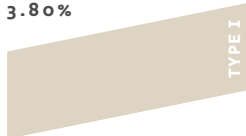
HC-122 Great Barrington Green
6.20%



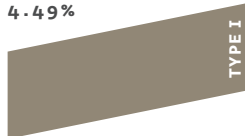
HC-72 Branchport Brown
9.28%



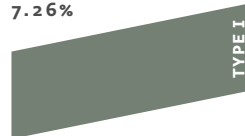
HC-84 Elmira White
3.80%



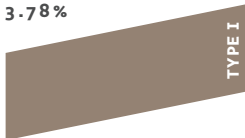
HC-104 Copley Gray
4.49%



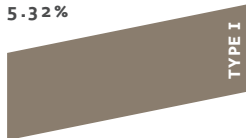
HC-124 Caldwell Green
7.26%



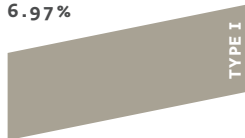
HC-76 Davenport Tan
3.78%



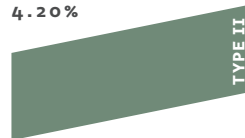
HC-85 Farview Taupe
5.32%



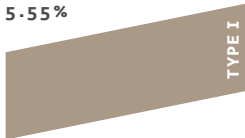
HC-105 Rockport Gray
6.97%



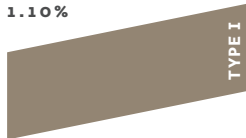
HC-130 Webster Green
4.20%



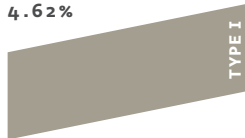
HC-77 Alexandra Beige
5.55%



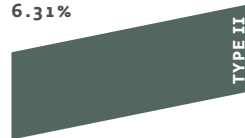
HC-86 Kingsport Gray
1.10%



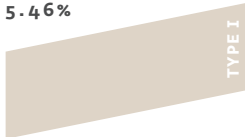
HC-107 Gettysburg Gray
4.62%



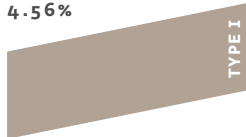
HC-134 Tarrytown Green
6.31%



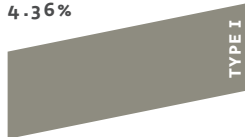
HC-78 Litchfield Gray
5.46%



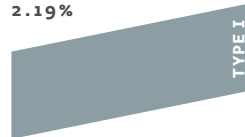
HC-87 Ashley Gray
4.56%

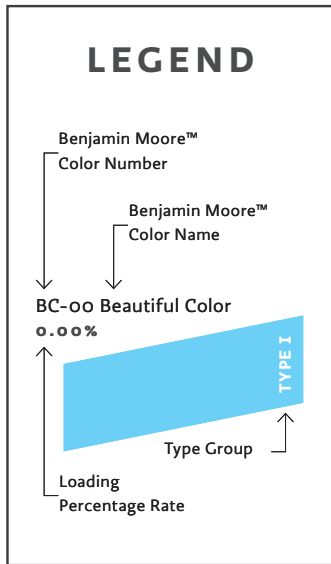


HC-108 Sandy Hook Gray
4.36%

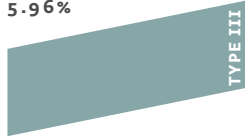


HC-145 Van Courtland Blue
2.19%

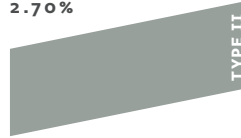




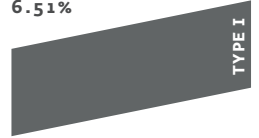
HC-148 Jamestown Blue
5.96%



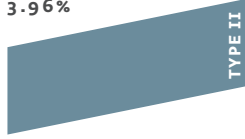
HC-164 Puritan Gray
2.70%



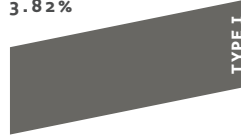
HC-178 Charcoal Slate
6.51%



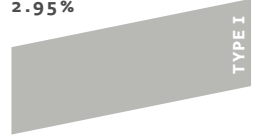
HC-151 Buckland Blue
3.96%



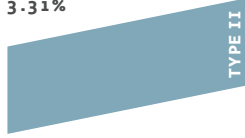
HC-166 Kendall Charcoal
3.82%



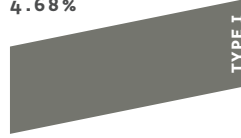
HC-179 Platinum Gray
2.95%



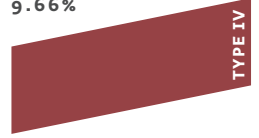
HC-152 Whipple Blue
3.31%



HC-167 Amherst Gray
4.68%



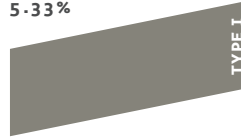
HC-181 Heritage Red
9.66%



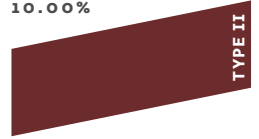
HC-154 Hale Navy
10.00%



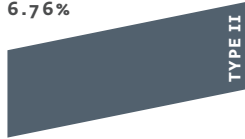
HC-168 Chelsea Gray
5.33%



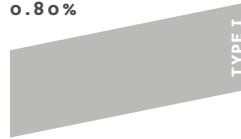
HC-182 Classic Burgundy
10.00%



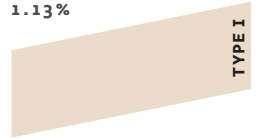
HC-155 Newburyport Blue
6.76%



HC-169 Conventry Gray
0.80%



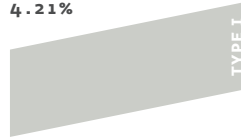
OC-3 Lambskin
1.13%



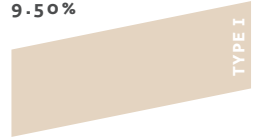
HC-157 Narragansett Green
4.80%



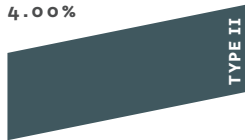
HC-170 Stonington Gray
4.21%



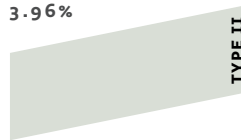
OC-4 Brandy Cream
9.50%



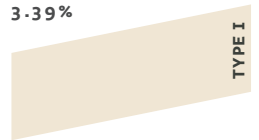
HC-158 Newburg Green
4.00%



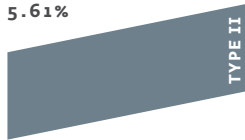
HC-171 Wickham Gray
3.96%



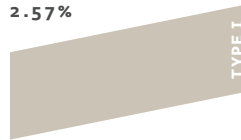
OC-7 Creamy White
3.39%



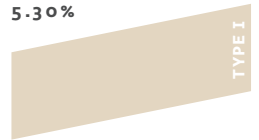
HC-159 Philipsburg Blue
5.61%



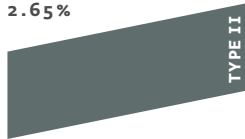
HC-172 Revere Pewter
2.57%



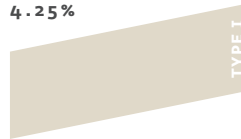
OC-12 Muslin
5.30%



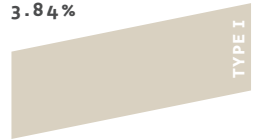
HC-160 Knoxville Gray
2.65%



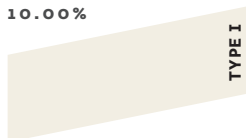
HC-173 Edgecomb Gray
4.25%



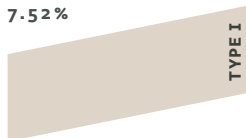
OC-15 Baby Fawn
3.84%



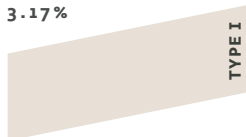
OC-17 White Dove
10.00%



OC-16 Cedar Key
7.52%



OC-20 Pale Oak
3.17%



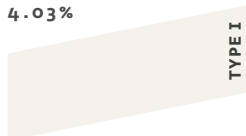
OC-22 Calm
4.04%



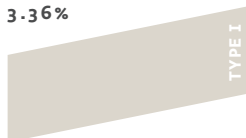
OC-23 Classic Gray
3.10%



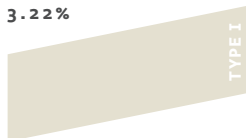
OC-25 Cloud Cover
4.03%



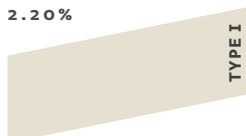
OC-27 Balboa Mist
3.36%



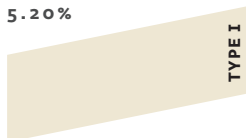
OC-30 Gray Mist
3.22%



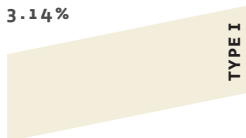
OC-32 Tapestry Beige
2.20%



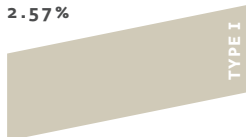
OC-33 Opaline
5.20%



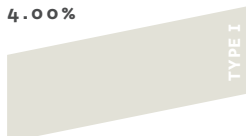
OC-39 Timid White
3.14%



OC-48 Hazy Skies
2.57%



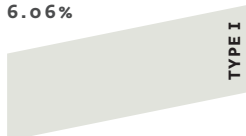
OC-51 Intense White
4.00%



OC-54 White Wisp
4.00%



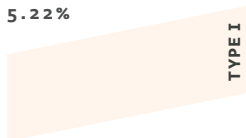
OC-55 Paper White
6.06%



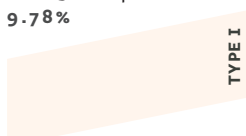
OC-65 Chantilly Lace
4.00%



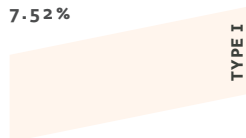
OC-73 Opal
5.22%



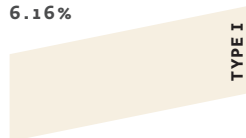
OC-83 Antique White
9.78%



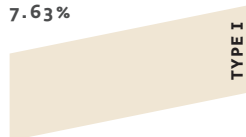
OC-85 Mayonnaise
7.52%



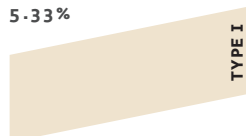
OC-86 White Blush
6.16%



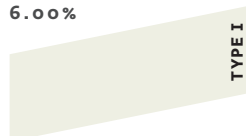
OC-95 Navajo White
7.63%



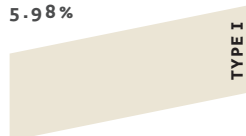
OC-99 Deserted Island
5.33%



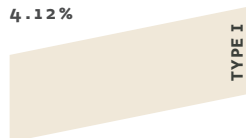
OC-119 Cloud Nine
6.00%



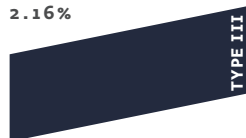
OC-131 White Down
5.98%



OC-142 Sail Cloth
4.12%



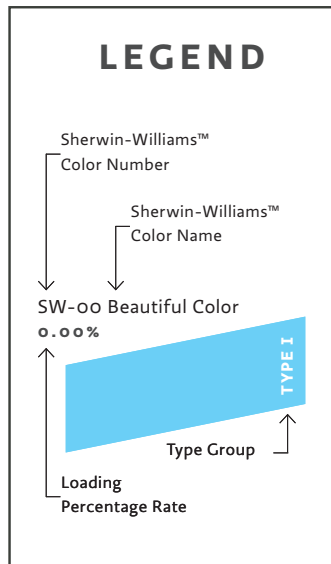
SC-51 Yankee's Navy
2.16%



We have also formulated some colors based on the Sherwin-Williams™ color wheel.

**SHERWIN
WILLIAMS**

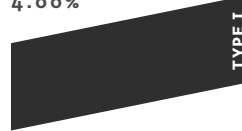
These pigments are also split into four pricing tiers based on raw material cost.



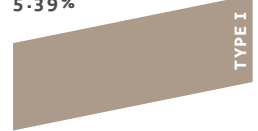
SW-6076 Turkish Coffee
9.40%



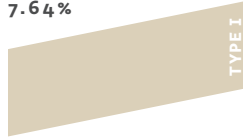
SW-6258 Tricorn Black
4.00%



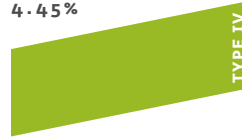
SW-7501 Threshold Taupe
5.39%



SW-6155 Rice Grain
7.64%



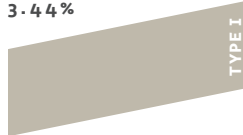
SW-6921 Electric Lime
4.45%



SW-7615 Sea Serpent
6.52%



SW-6170 Techno Gray
3.44%



SW-6990 Caviar
6.30%



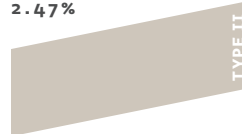
SW-7636 Origami White
8.00%



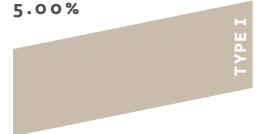
SW-6203 Spare White
4.60%



SW-7043 Worldly Gray
2.47%



SW-9173 Shiitake
5.00%







Glazes are used to produce color enhancements, whether as a full color treatment, or to adjust the concrete's base color in one direction or the other. Glazes are a water-based color treatment

GLAZING OVERVIEW

that will produce a consistent color regardless of the state of the concrete.

Available in a wide color range, glazes can be blended together to produce a wide array of shades. Glazes are UV resistant, and do not contain acids, metal salts, or acetone.

Whether applied over stencils to create patterns, used as a tint, or applied to create variation and movement, the possibilities are endless. There are many techniques for application, which include rubbing with a microfiber cloth, dabbing with a cloth, applying with a roller or brush, and so on.

Packaged in 4oz Spray Bottles, Quarts, and Gallons



Standard Colors:



Black



White



Umber



Leather



Maple



Olive



Bright
Red



Blue



Green



Yellow



Magenta





HELPFUL TIPS FOR APPLYING GLAZES:

- The material can be applied over polished concrete, but it will be far more durable on concrete that is matted or etched.
- When the glaze is wet, it is active. When you rub across a still wet area, it will remove the material.
- The longer the glaze has been dried, the harder it will be to remove. Soon after drying, it can be removed with a wet towel. If removed the next day it will require diamond abrasives.
- Apply in thin layers. You will end up with a more durable finish applying multiple thin layers as opposed to one thick layer.
- The first coat is the hardest. When the concrete is thirsty, it is tough to keep from getting streaks. You can dilute the glaze with 50% distilled water. If you want to make an even more dilute solution, you can make a base of 25% CH Prep, 25% FS Seals, and 50% water. With this formula, you can make as dilute a glaze as you want. The further the dilution on your first layer, the more forgiving.
- A dilute version of the Black Glaze is a very effective way to enhance virtually any color. In many cases, this will produce the most durable 'wet look' effect you will find.
- Protect your piece with sealer. Glazes are fully UV resistant, and will stand up to a fair bit of abrasion, but a sealer should be used to help protect them for the long haul.



