

Maker Pro Paint™ METALLICS



smooth-on.com

Water-Based • UV Resistant • LOW VOCs • ASTM E-84, Class A Flame Rated

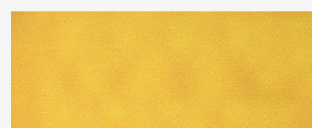
PRODUCT OVERVIEW

Maker Pro Paint™ Metallics are professional paints developed for rigorous applications requiring a metallic appearance and outdoor durability. They add a smooth, reflective shimmer that is perfect for themed environment applications at amusement parks, zoos, architectural elements, accent walls in professional and luxury spaces, as well as furniture restoration. They are also suitable for various rigid and flexible surface painting application projects - such as model prototyping and costuming.

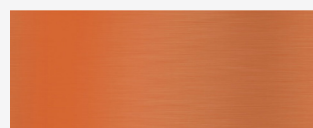
Maker Pro Paints™ are Low-VOC, water-based acrylic-urethanes that deliver superior color, adhesion, and durability. These paints are highly resistant to abrasions/scratches and will withstand severe weather conditions. Maker Pro Paints™ are also “public space” safe and certify to the ASTM E-84, Class A fire rating.



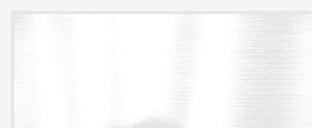
Silver



Gold



Copper



White

Add Smooth-On's So-Strong Tints™ to Maker Pro Metallic White and create your own custom metallic colors.

See page 4 for details.

When used with the **Adhesion Promoter**, Maker Pro Paints™ will bond tenaciously to various rigid substrates – including: rigid urethanes, rigid urethane foams, epoxy plastics, wood, fiberglass, aluminum, concrete, plasters, steel, and more. When mixed with the **FLEX Additive**, Maker Pro Paints™ will become more elastic and bond to flexible or semi-rigid substrates including fabrics, semi-rigid urethane resins, flexible urethane foams, urethane rubbers, and latex rubbers.

For best results and product performance, follow all directions outlined in this technical bulletin.

STORAGE & USAGE GUIDELINES – ENVIRONMENT: TEMPERATURE & HUMIDITY

- For best results, store and use Maker Pro Paints™ at room temperature: 73°F (23°C).
- Do not allow Maker Pro Paint™ to freeze (paint will become unusable)
- Avoid painting in temperatures below 60°F (16°C) or above 85°F (29°C).
- Avoid painting in relative humidity levels above 65%.
- Close all containers tightly when not in use.

ENVIRONMENTAL EFFECTS ON DRYING PAINT:

- Within the temperature range of 65°F (18°C) to 85°F (29°C) and 65% relative humidity, Maker Pro Paint™ will dry to a matte coat in about 10 – 15 minutes. Colder temperatures will prolong drying time, while warmer temperatures will reduce drying time.
 - When painting in humid conditions or temperatures lower than 65°F (18°C), make sure each coat of paint has dried “tack-free” before applying another coat.
 - To reduce drying times, use a motorized fan to keep air moving above and across painted surface. Avoid pointing fans directly at wet/fresh paint.
-

PAINT PROJECT PLANNING & PREPARATION:

BEST PRACTICE: CONDUCT A SMALL-SCALE TEST

Before using large amounts of paint and/or covering your subject matter, always conduct a small-scale test to ensure your paint & process yields desired color and effect(s) on project substrates.

STEP 1: EVALUATE SURFACE AREA COVERAGE / PAINT VOLUME (“HOW MUCH PAINT DO I NEED?”)

- 1 Pint of Maker Pro Paint™ covers approx. 43 sq ft (4 sq meters) at 1.5 - 2 mils dry film thickness per coat (2-3 coats recommended).
- 1 Gallon of Maker Pro Paint™ covers approx. 350 sq ft (33 sq meters) at 1.5 - 2 mils dry film thickness per coat (2-3 coats recommended).
- 1 Gallon of Maker Pro Paint™ Adhesion Promoter covers approx. 600 sq ft (56 sq meters) at 1.2 - 1.5 mils dry film (only 1 thin coat needed).

***NOTE:** Surface area coverage varies slightly per color. Coverage will also vary depending on substrate type and texture.*

STEP 2: CHOOSE YOUR PAINTING EQUIPMENT & APPLICATION METHOD:

- **Brush:** use brushes made for water-based paints (nylon bristle brushes, synthetic bristle brushes, or foam brushes)
- **Roller:** use a synthetic or microfiber roller. Keep a wet edge on painted surface for best coats/performance

Spray Equipment:

- **Airbrush:** use size 0.3mm - 0.5mm nozzle tip, & spray at manufacturer’s recommendations, generally ~ 25 – 35+ psi
- **Touch-Up Gun:** use size 1.2mm nozzle tip, & spray at manufacturer’s recommendations, generally ~ 22 – 24 psi
- **Spray Gun:** use size 1.2mm – 1.4mm nozzle tip, & spray at manufacturer’s recommendations, generally ~ 22 – 24 psi

STEP 3: SURFACE PREPARATION

FOR ALL SURFACES: All surfaces to be painted must be entirely free of dust, dirt, oil, grease, and other contaminants. Remove all loose chalking or flaking paint from the surface. Clean using isopropyl alcohol.

FOR PAINTING RIGID SUBSTRATES & SURFACES:

- 1) Sand the surface to be painted with 320-grit sandpaper or a coarse scuff pad. Dry sand only. After sanding, clean surfaces using isopropyl alcohol and allow substrate to air dry completely.
- 2) **Apply one thin coat of Maker Pro Paint™ Adhesion Promoter** and let air dry for 30 minutes to a uniform sheen before applying paint.

FOR PAINTING FLEXIBLE SUBSTRATES & SURFACES: *(Note: Sanding Not Required)*

Painting flexible surfaces (like fabrics, urethane/latex rubbers, or flexible foams) requires the paint to “flex” with the substrate.

Mix FLEX Additive with Maker Pro Paint™ in a mix ratio of 1:1 by volume to make the paint:

- a) bond to flexible surfaces
- b) more elastic
- c) highly resistant to cracking and peeling - even when the painted object is subject to bending, pulling, twisting, etc.

BEST PRACTICE:

Always mix FLEX Additive and Maker Pro Paint™ thoroughly to a uniform consistency using a flat edge paint stirrer.

NOTE: FLEX Additive is translucent white and will have no effect on final color once the paint dries.

IMPORTANT:

- Do not use Adhesion Promoter when painting flexible surfaces.
- Do not use FLEX Additive when painting rigid surfaces.

STEP 4: PREPARE YOUR PAINT

Pre-Mix: Thoroughly stir and mix Maker Pro Paint™ each time before use.

Adding FLEX Additive: For Painting Flexible Substrates: Mix FLEX Additive with Maker Pro Paint™ in 1:1 Mix Ratio (*instructions above*).

Thinning Paint (Optional):

- Thinning Maker Pro Paint™ is generally not required for brush-on or roller application.
- If thinning is required, thin with distilled water.
- For Painting Flexible Substrates & Surfaces: Mix Flex Additive with Maker Pro Paint™ in Mix Ratio of 1:1 by volume BEFORE thinning with distilled water.

Recommendations for Thinning With Distilled Water:

- Add distilled water slowly– adding & mixing in small increments (no more than 5% of total paint volume) at a time.
- For application with airbrush: thin paint with about 25% - 50% of total paint volume.
- For application with touch-up gun or spray gun: thin paint with about 10% - 20% of total paint volume.
- For all spray applications: Use distilled water to thin paint as needed to achieve finely atomized spray.

INSTRUCTIONS FOR APPLYING MAKER PRO PAINT™

- Generally, 2-3 coats of Maker Pro Paint™ are required for complete coverage of most substrates/surfaces.
- Maker Pro Paint™ will dry to a matte coat in about 10 – 15 minutes at around room temperature.
- Plan the timing of each paint coat accordingly.
- Apply Maker Pro Paint™ in thin coats (approx. 2 mils wet).
- Let each paint coat dry tack-free before applying the next coat.

DRYING

- **Do not** cure/dry Maker Pro Paint™ with heat or a heat gun – doing so will cause a loss of adhesion.
- Optional: use a motorized fan positioned above painted surfaces to reduce drying time.
Avoid pointing fans directly at wet/fresh paint.
- Allow for extended drying times when painting in humid conditions or temperatures lower than 65°F (18°C).
- After the final coat of paint is applied, let all coats dry for 48 hours at room temperature for best performance / maximum strength and scratch resistance.
- Maker Pro Paint™ dries to vibrant colors. Any “milky haze” appearance of wet paint will dry clear.

AIRBRUSH, TOUCH-UP GUN, AND SPRAY GUN – APPLICATION INSTRUCTIONS

- We recommend applying 1 tack coat (medium) and at least 2 medium-wet coats .
- Apply 3 coats total using a 50/50 overlapping pattern for pinhole-free coverage.
- Allow each coat of Maker Pro Paint™ to air dry to a matte finish before applying subsequent coats.
- Avoid “dry spraying” - i.e. spraying at too high of a psi or spraying too far away from surface (*this may create adhesion failure*).
- Optimum spray distance is 6” - 8” between tip and surface.
- Paint with spray gun using a gradual motion - aiming to achieve an even distribution of paint.
- Allow a 1 hour cure time minimum if top-coating.

APPLYING A CLEAR TOPCOAT

- Maker Pro Paint™ may be top-coated with a wide variety of clear top coatings - including: water-based, solvent-based, catalyzed (2k), urethanes, and clear epoxies.
- Prior to adding a topcoat to your painted project, always conduct a small-scale test when first trying to combine a new paint and new clear coat material together. For best results, ensure your paint has dried moisture-free.
- Only apply your top coating material to paint that has completely dried.

CLEAN-UP: Use water to clean brushes and spray guns after use and to rinse in-between color changes.

Doing More with Maker Pro Paint™ Metallic White and So-Strong™ Color Tints

- ▶ SO-Strong™ Color Tints blend easily with Metallic White, allowing the user to create an infinite variety of custom metallic colors.
- ▶ Intensity of the color effect is determined by the amount of So-Strong™ Color Tints added in proportion to the paint volume. Increasing the amount of tint results in more dramatic and vibrant color variations.
Do not exceed more than 3% parts by weight of tint.

SAFETY FIRST

The Safety Data Sheet (SDS) for this or any Smooth-On product should be read prior to use and is available upon request from Smooth-On. All Smooth-On products are safe to use if directions are read and followed carefully. **Keep Out of Reach of Children. BE CAREFUL** - Use in a well-ventilated area. Avoid contact with eyes. Wash hands thoroughly with soap and warm water after use. Do not ingest. Skin contact: Thoroughly wash with soap and warm water before Maker Pro Paint™ dries. Wearing gloves is recommended. Eye contact: Rinse with clean water for 15 minutes. Seek medical attention. Inhalation: Use with adequate ventilation. Do not eat, drink or smoke when using this product. Avoid release to the environment. For spray application: Ensure fresh air entry during application and drying. If you experience eye watering, headache or dizziness, wear an appropriate, properly fitted respirator (NIOSH approved).

IMPORTANT - The information contained in this bulletin is considered accurate. However, no warranty is expressed or implied regarding the accuracy of the data, the results to be obtained from the use thereof, or that any such use will not infringe upon a patent. User shall determine the suitability of the product for the intended application and assume all risk and liability whatsoever in connection therewith.